

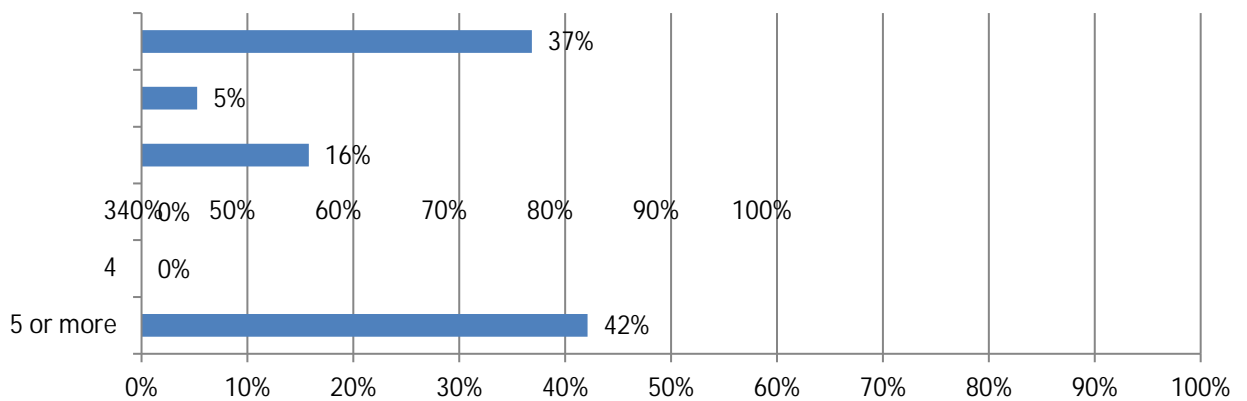


2024 Work Zone Awareness Survey Results

Washington Results

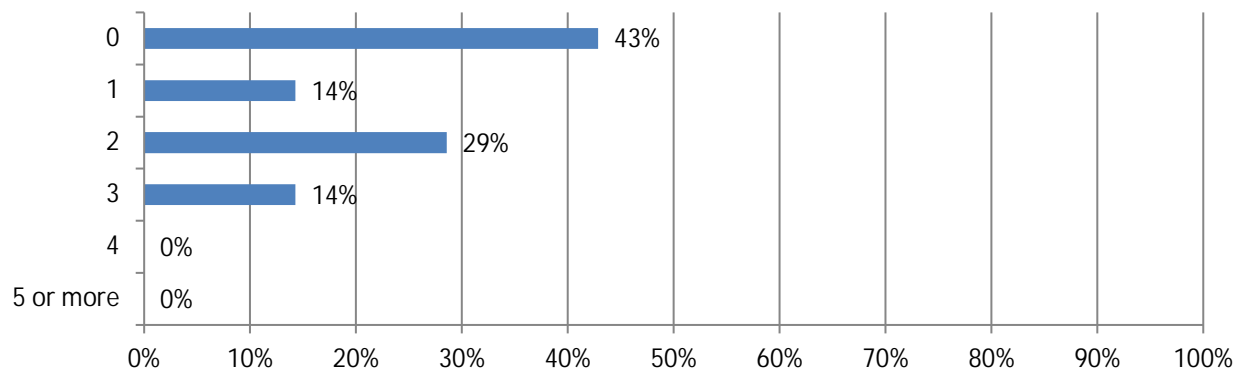
Total 21 responses; Responses varied for some questions. Percentages are based on responses to each question and may not sum to 100 due to rounding (total specified in some questions).

1. In the past 12 months, how many crashes involving a motor vehicle have occurred at a highway work zone where your firm operates? (19 Responses)



2. How many construction workers were injured in these crashes? (13 Responses)

3. How many drivers or passengers were injured in these crashes? (7 Responses)

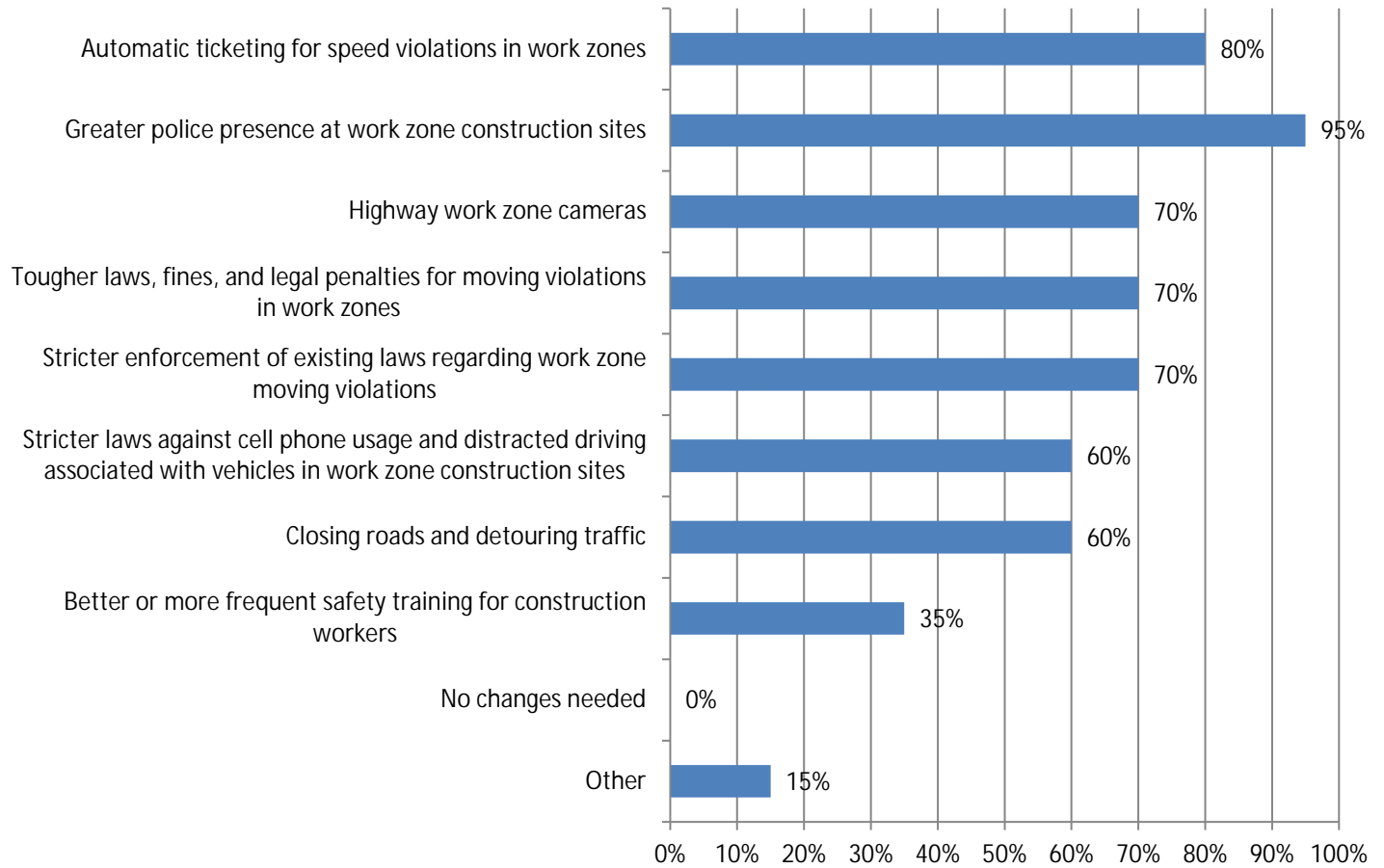


4. How many construction worker fatalities resulted from these crashes? (13 Responses)

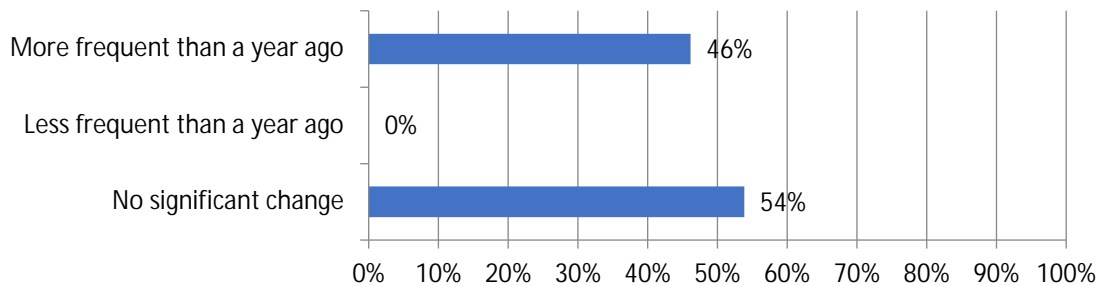
5. How many driver or passenger fatalities resulted from these crashes? (8 Responses)

8. How much of a risk are highway work zone crashes now compared to one year ago? (18 Responses)

12. Would any of these measures help reduce the number of highway work zone crashes, injuries and/or fatalities? (20 Responses)



13. Has the frequency of work zone crashes when performing night work changed from a year ago? (13 Responses)



14. If you answered yes, what do you attribute this to? (6 Responses)

