

## 2024 Work Zone Awareness Survey Results

### California Results

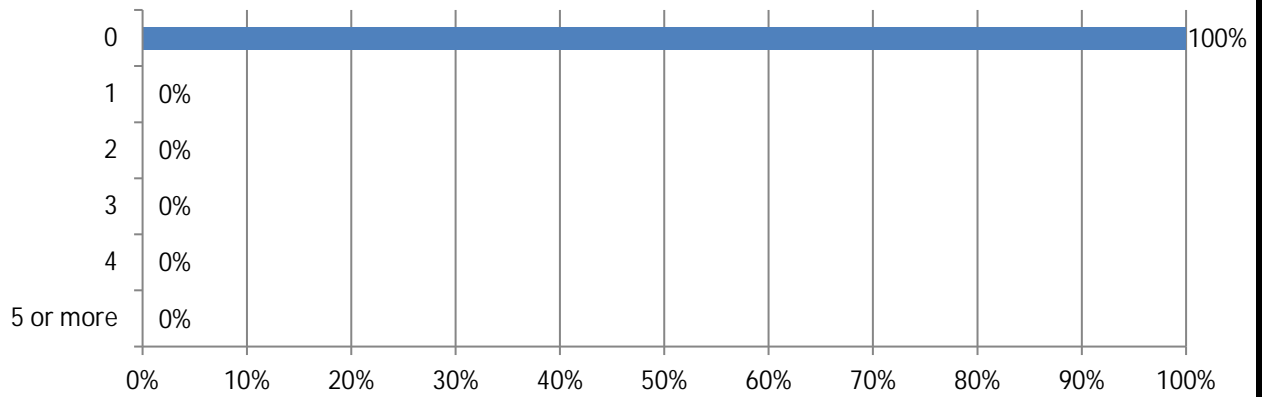
*Total 21 responses; Responses varied for some questions. Percentages are based on responses to each question and may not sum to 100 due to rounding (total specified in some questions).*

1. In the past 12 months, how many crashes involving a motor vehicle have occurred at a highway work zone where your firm operates? (20 Responses)

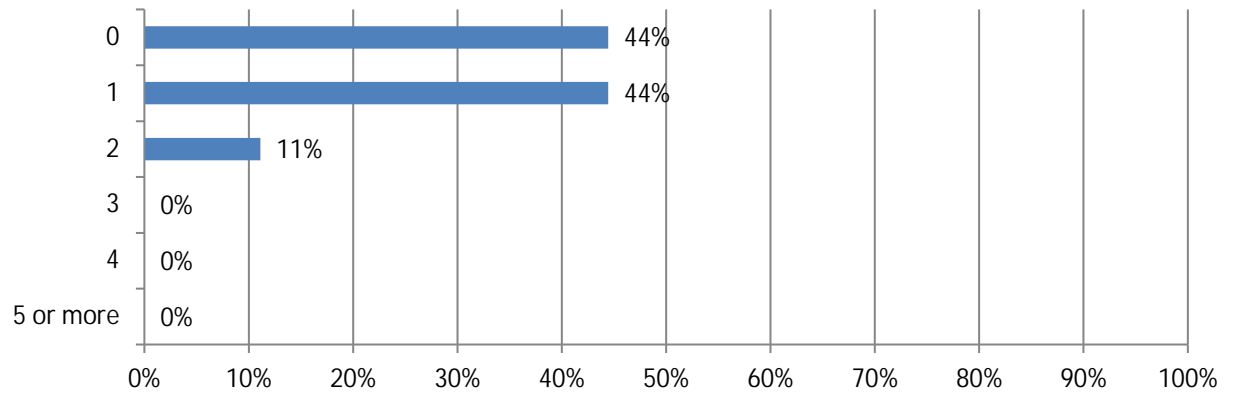
2. How many construction workers were injured in these crashes? (10 Responses)

3.

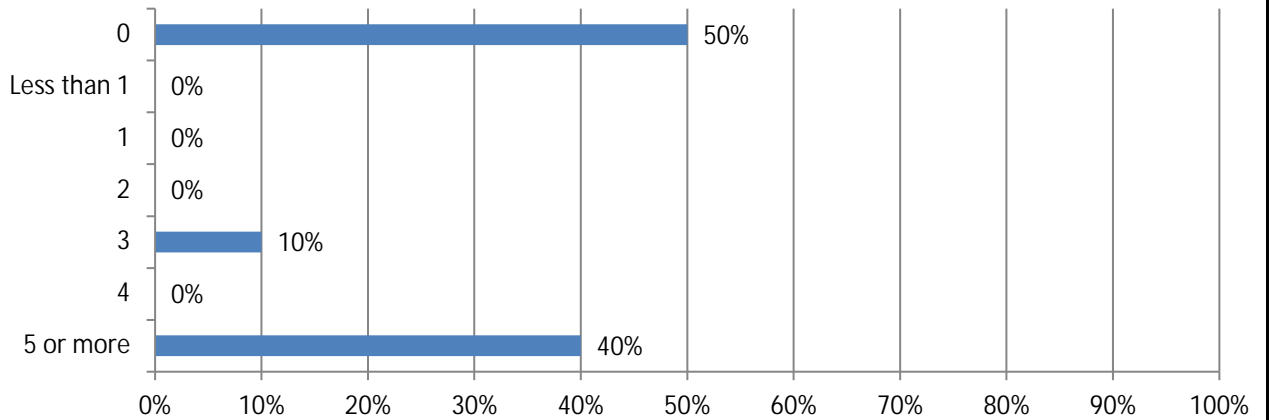
4. How many construction worker fatalities resulted from these crashes? (10 Responses)



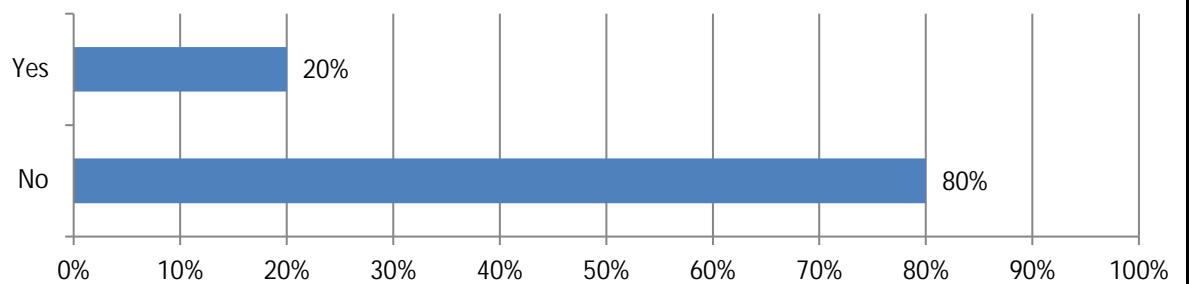
5. How many driver or passenger fatalities resulted from these crashes? (9 Responses)



6. How many days have your firm's projects been delayed because of these crashes? (10 Responses)



7. Have work zone crashes affected your ability to hire and attract new workers into the industry? (5 Responses)



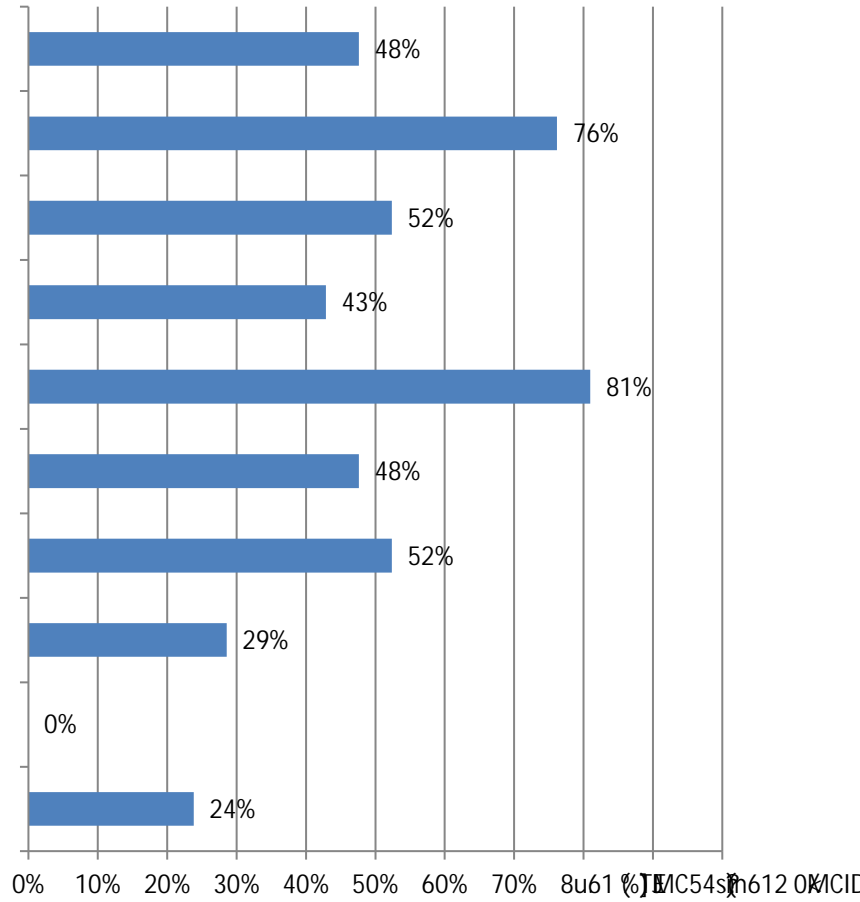
8. How much of a risk are highway work zone crashes now compared to one year ago? (20 Responses)

9. Why do you think highway work zone construction is more dangerous today compared to one year ago? (8 Responses)

10. Are the current penalties for moving violations in highway work zones sufficient to deter unsafe driving behaviors in the states where you work? (20 Responses)

11. Are enforcement efforts – R (r)4.1.9tions in highwa

12. Would any of these measures help reduce the number of highway work zone crashes, injuries and/or fatalities? (21 Responses)



13. Has the frequency of work zone crashes when performing night work changed from a year ago? (14 Responses)

14. If you answered yes, what do you attribute this to? (4 Responses)