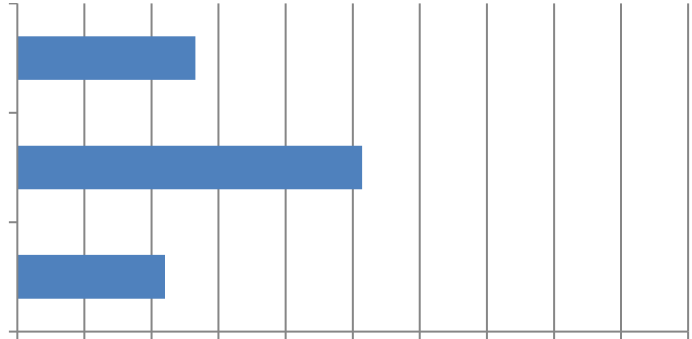


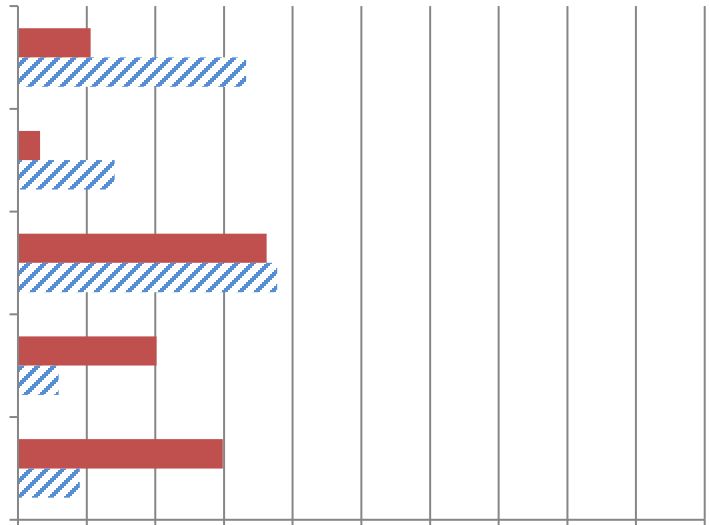
# 2022 Workforce Survey Results

## South Results

1. By what percentage has your firm's headcount changed in the past 12 months? Responses: 354



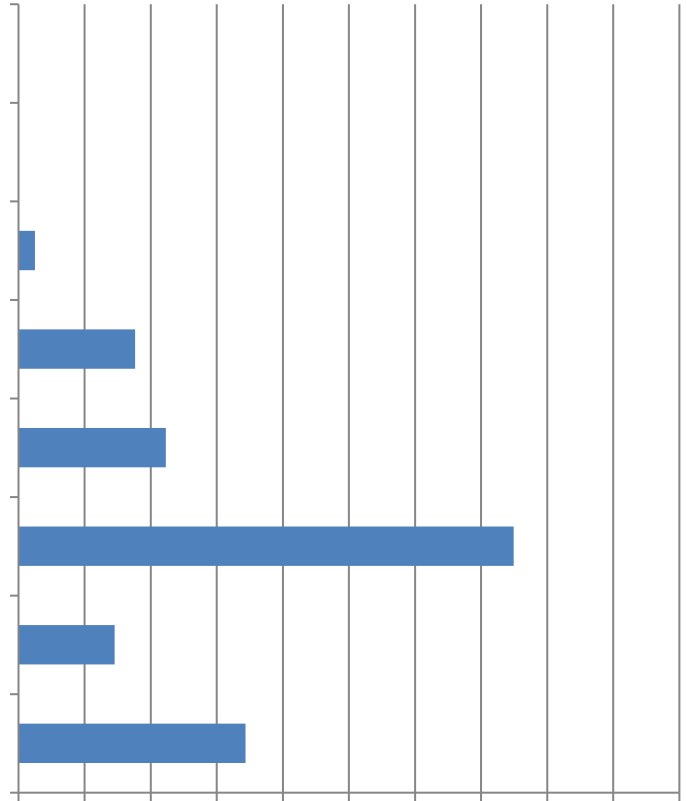
2. How many unfilled hourly craft or salaried positions did you have on June 30, 2022? Responses: 355 Salaried; 354 Craft



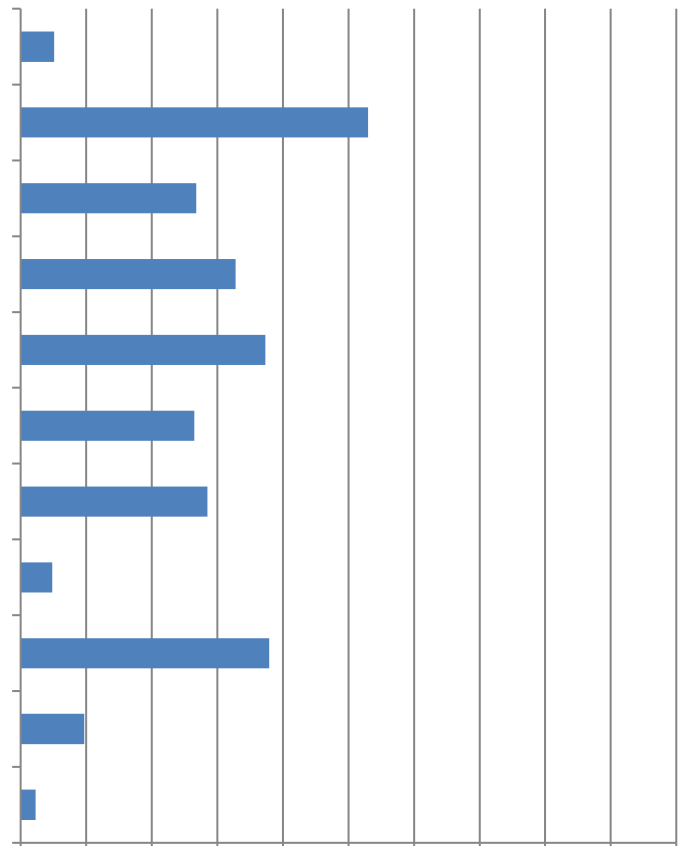




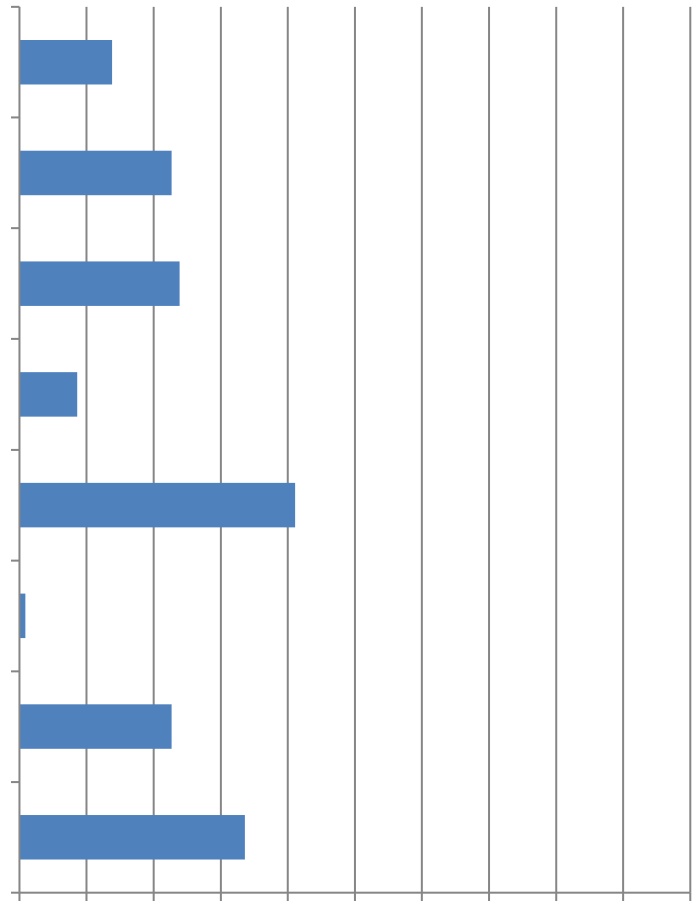
6. If you are having a hard time filling available positions, what are the reason(s)? (Mark all that apply)  
Responses: 349



7. Has your firm added or increased use of the following to provide workers in the past 12 months? (Mark all that apply) Responses: 351

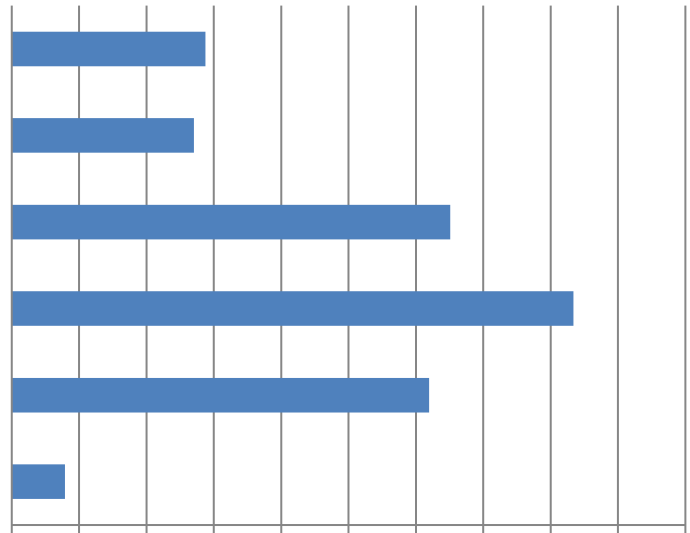


8. Has your firm made changes in hiring, training or scheduling in the past 12 months? (Mark all that apply) Responses: 348



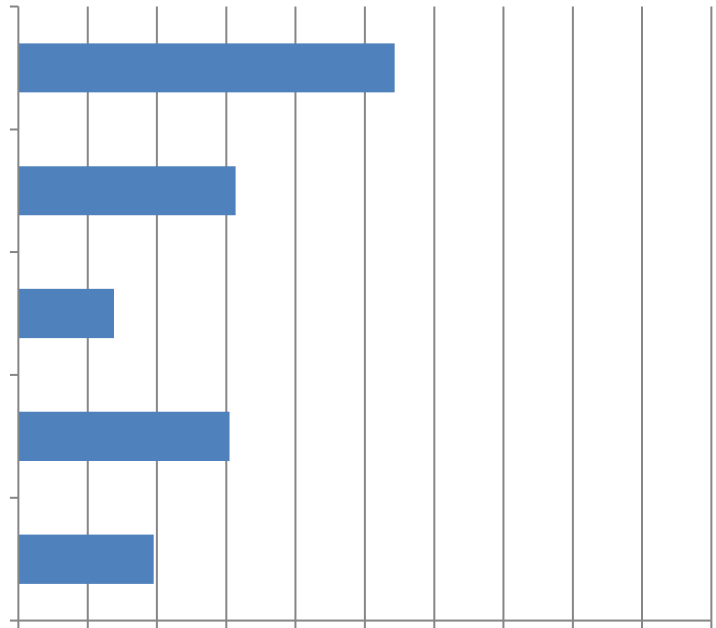
9. Has your firm adjusted pay and/or benefits for hourly craft or salaried personnel in the past 12 months? (Mark all that apply) Responses: 353

10. What impacts on project completion times, if any, is your firm experiencing? (Mark all that apply) Responses: 355

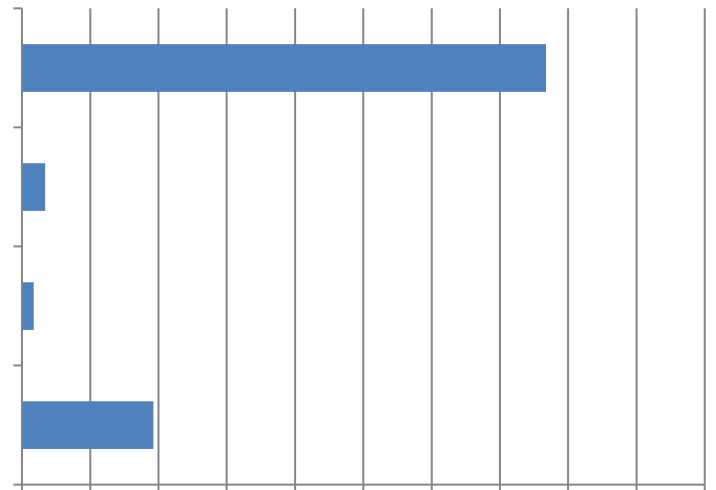


11. How have rising material costs affected your firm's projects, if at all? (Mark all that apply) Responses: 354

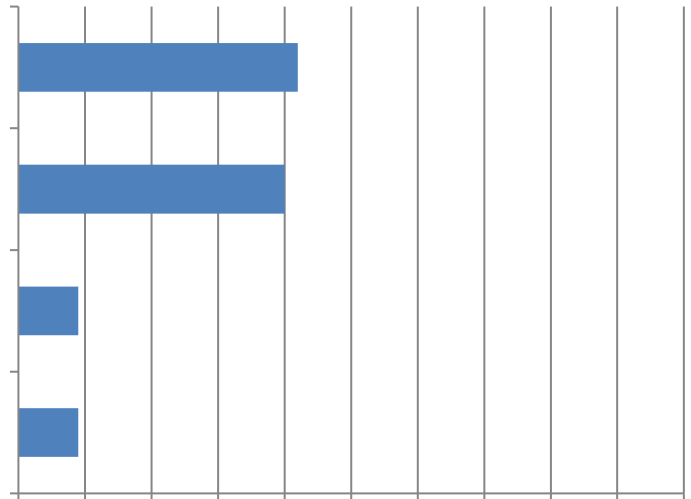
12. What impact, if any, are you experiencing with respect to upcoming or expected projects? (Mark all that apply) Responses: 348



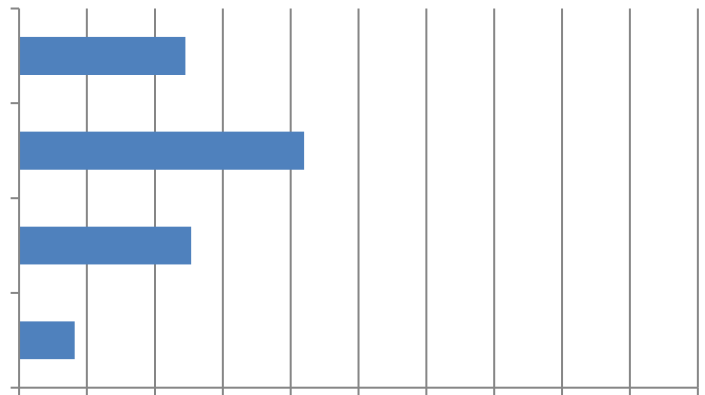
13. How do you expect your firm's headcount to change in the next 12 months? (Mark all that apply). Responses: 353



14. How many total employees did your firm employ at all of its locations as of June 30, 2022? Responses: 355



15. Estimate the total dollar amount of work your firm performed during the past 12 months. Responses: 355



16. Please indicate which of the following types of construction projects your firm performs (Mark all that apply)  
Responses: 355



17. When you self-perform construction work, do you operate as a union contractor or an open-shop contractor?

Responses: 347

