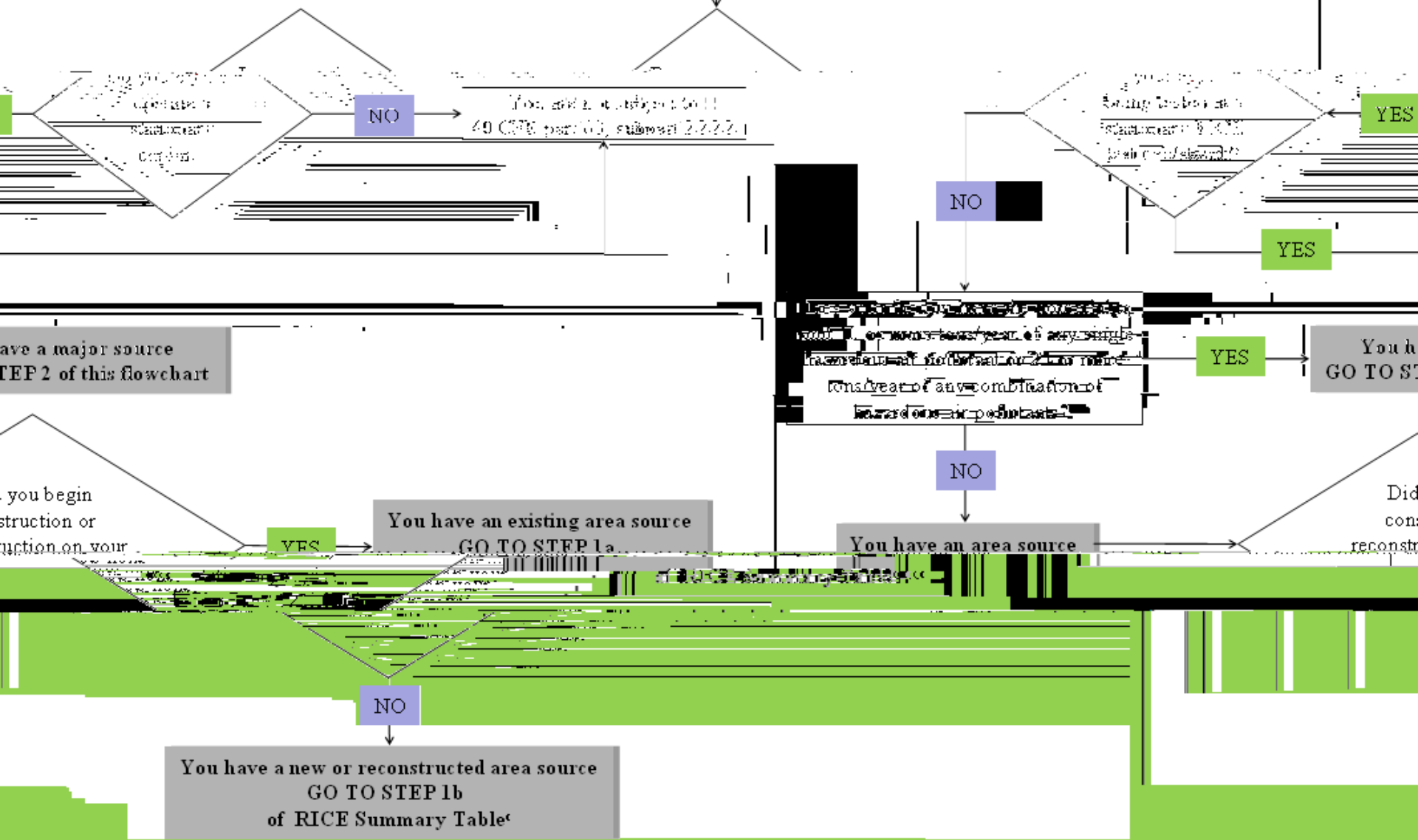


Stationary Reciprocating Internal Combustion Engines (RICE)

40 CFR part 63, subpart ZZZZ
Applicability Flowchart

START

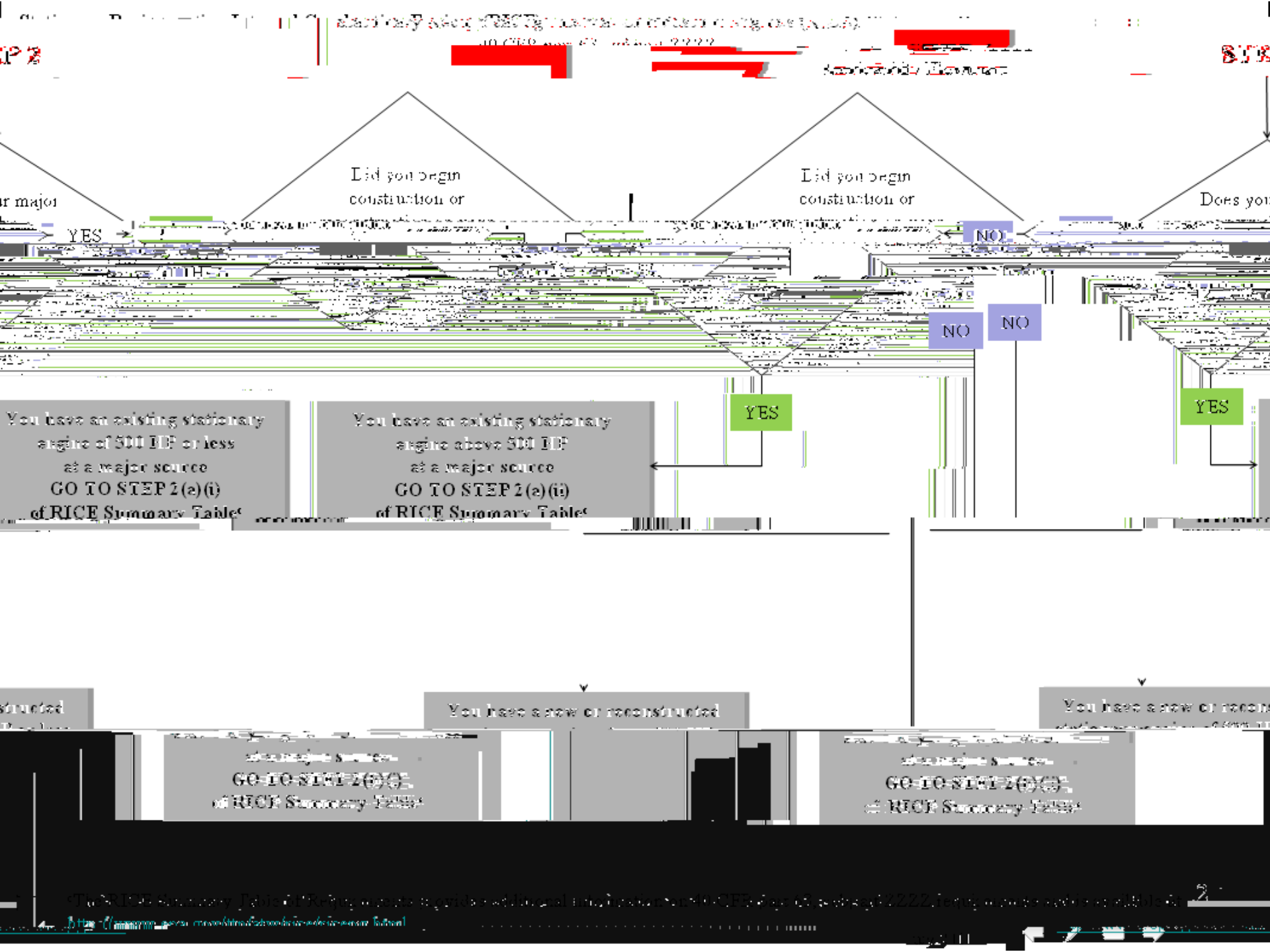


Apparatus used for testing uninstalled stationary or uninstalled mobile (motors) engines.

For more information on the applicability of this flowchart, please refer to <http://www.epa.gov/ttn/chief/ap42/index.html> or contact your EPA regional office.

*For assistance in determining applicability, contact your EPA regional office.

**For assistance in determining applicability, contact your EPA regional office.



major

Did you begin construction or reconstruction of a major source with a stationary engine of 500 HP or less?

Did you begin construction or reconstruction of a major source with a stationary engine above 500 HP?

Does your major source have a stationary engine of 500 HP or less?

YES

NO

NO

NO

YES

YES

You have an existing stationary engine of 500 HP or less at a major source. GO TO STEP 2(a)(i) of RICE Summary Table.

You have an existing stationary engine above 500 HP at a major source. GO TO STEP 2(a)(ii) of RICE Summary Table.

You have a new or reconstructed stationary engine of 500 HP or less at a major source. GO TO STEP 2(a)(i) of RICE Summary Table.

You have a new or reconstructed stationary engine of 500 HP or less at a major source.

You have a new or reconstructed stationary engine above 500 HP at a major source.

GO TO STEP 2(a)(i) of RICE Summary Table.

GO TO STEP 2(a)(ii) of RICE Summary Table.