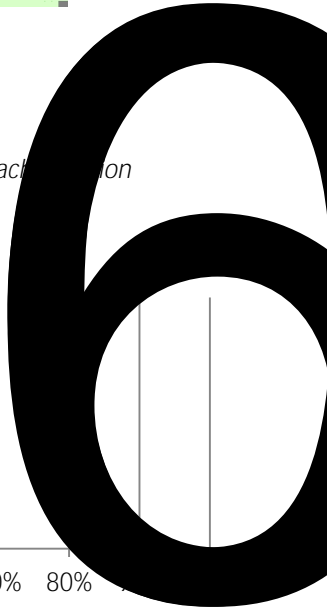
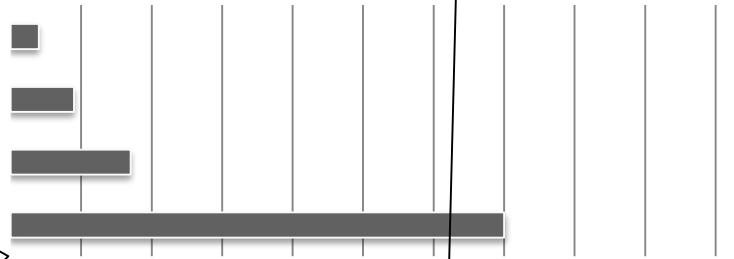
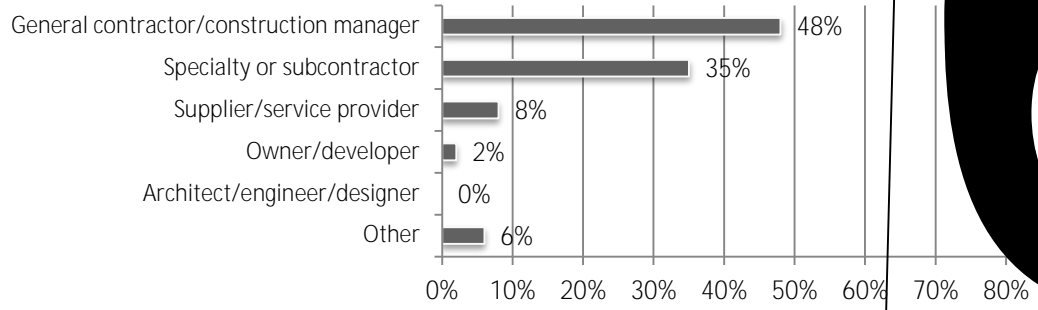
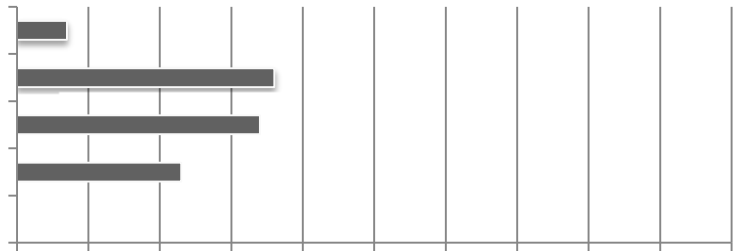
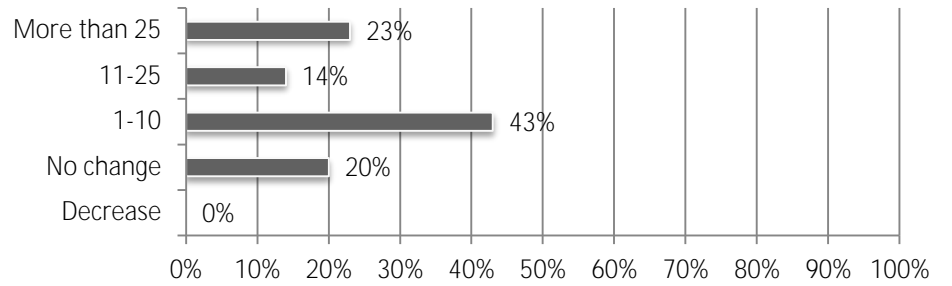


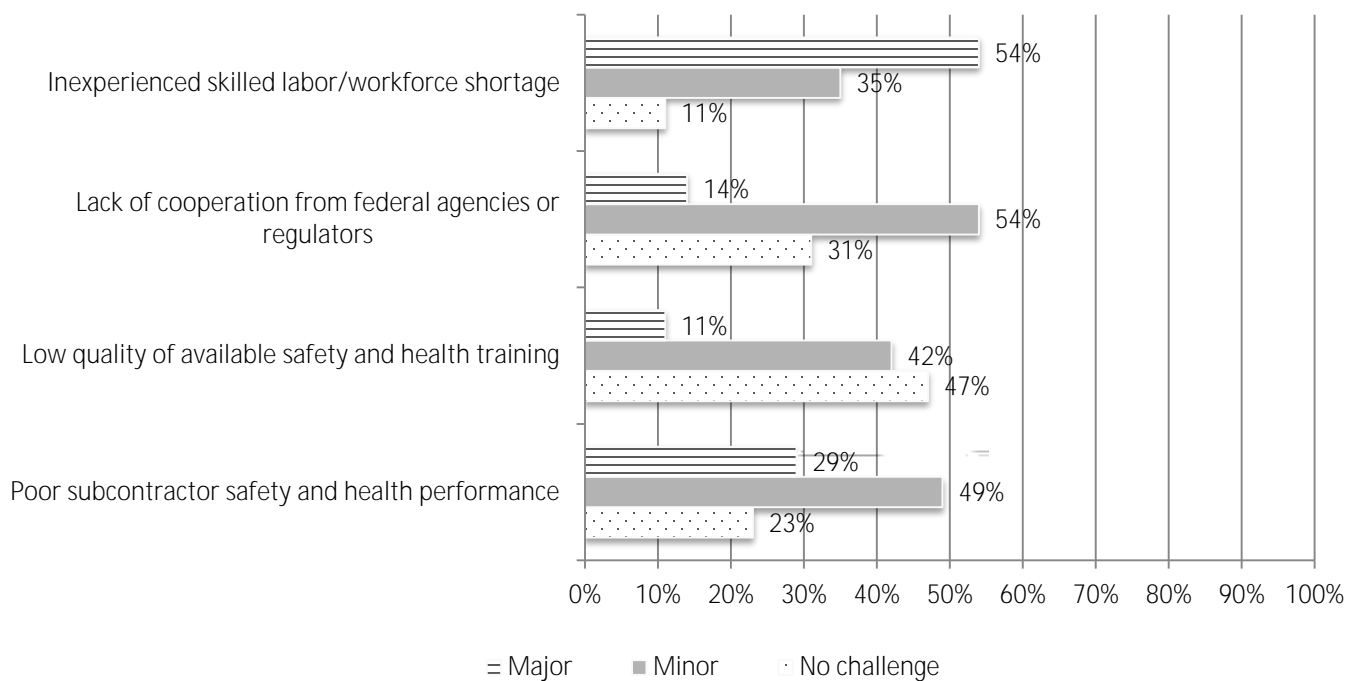
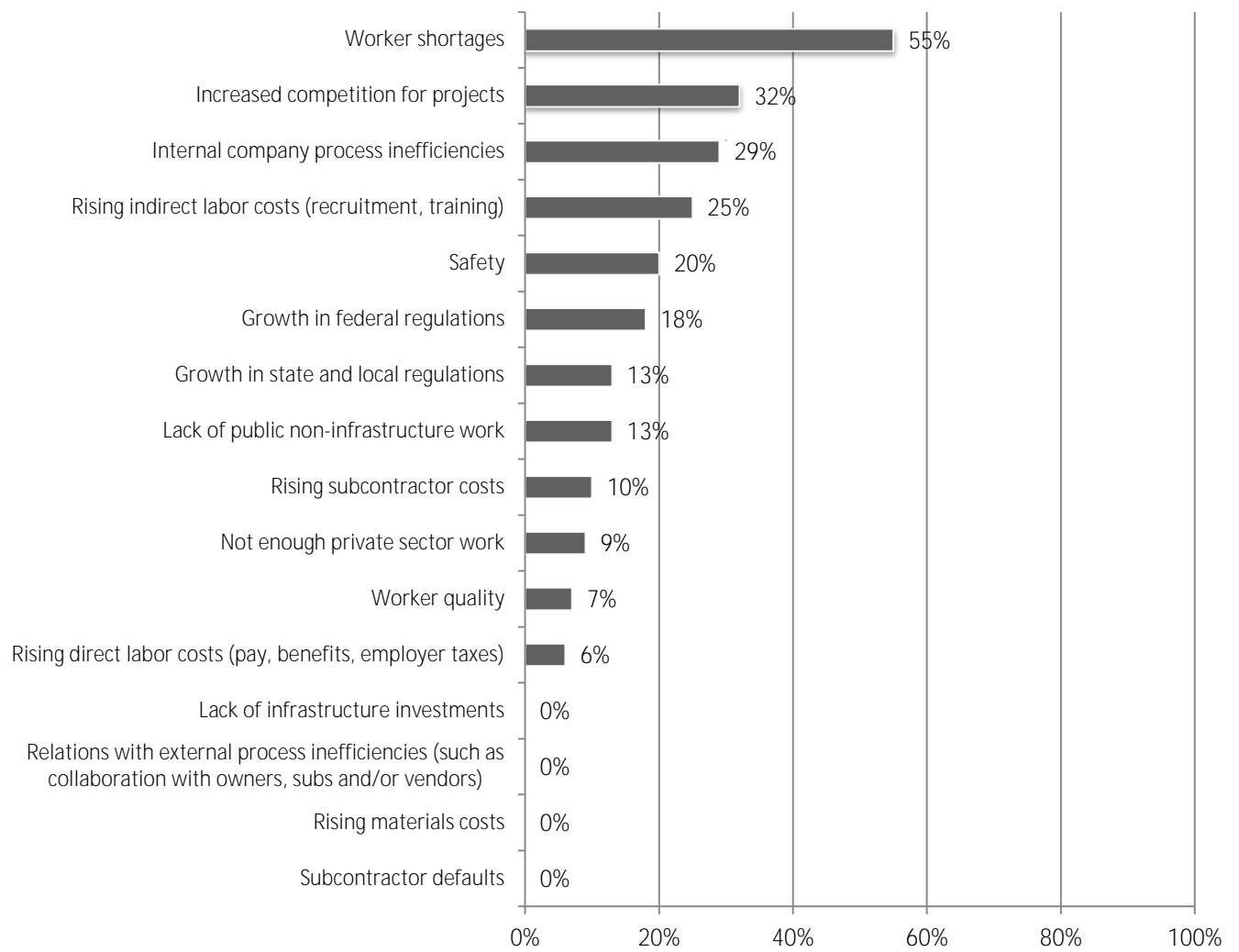
Total Responses: 48. Responses varied for some questions. Percentages are based on responses to each question and may not sum to 100 due to rounding.

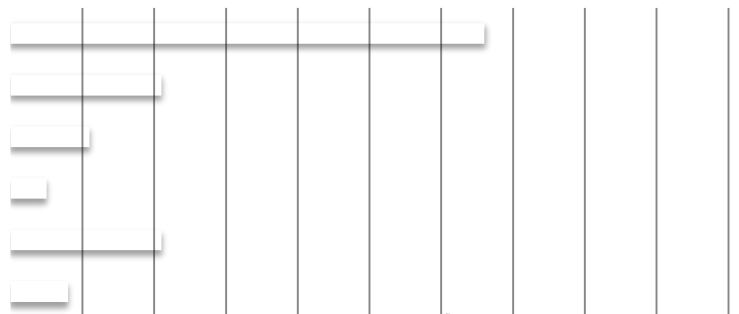
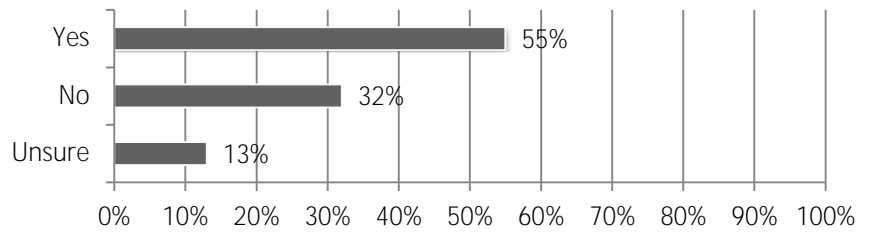
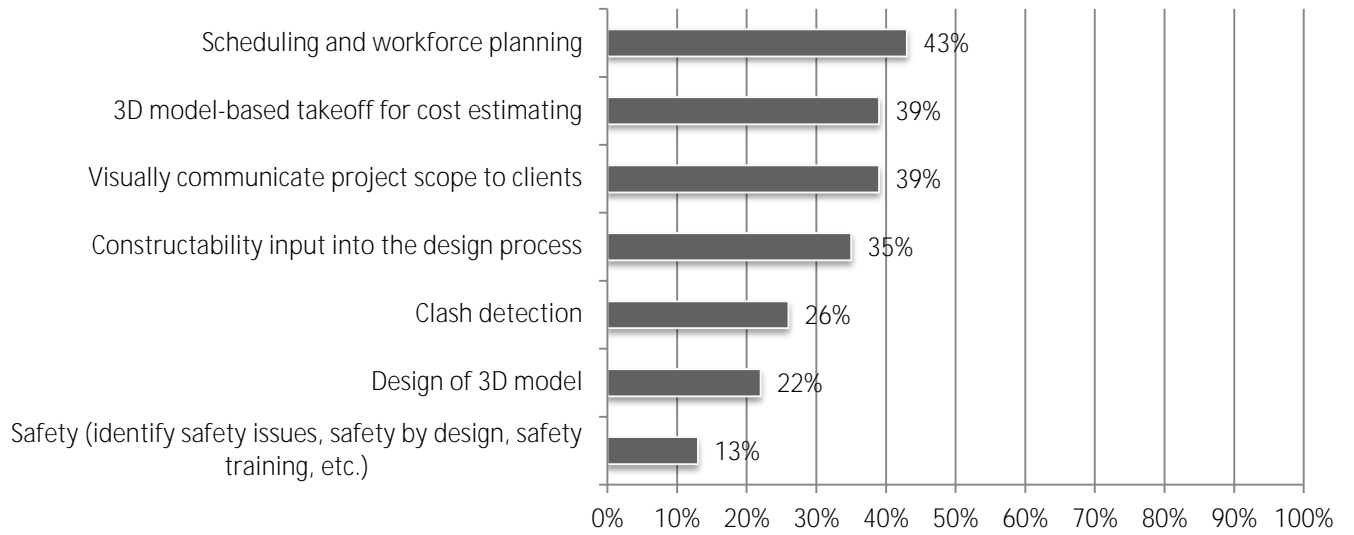
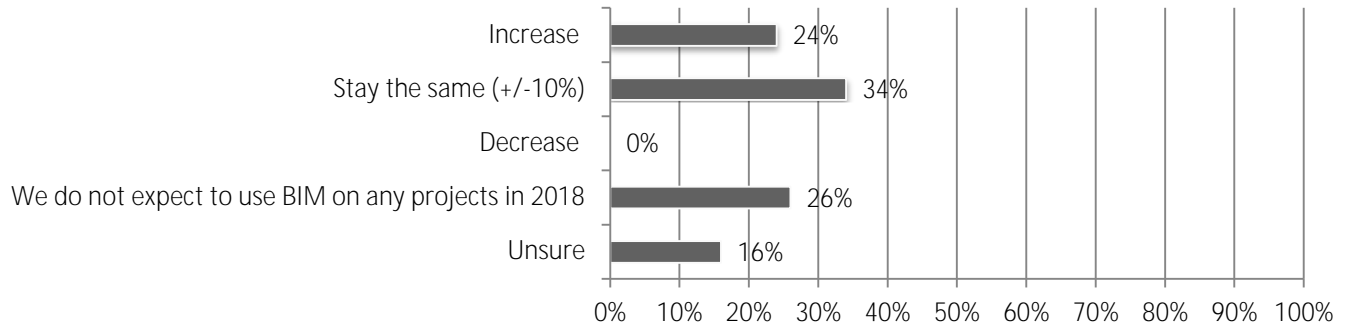


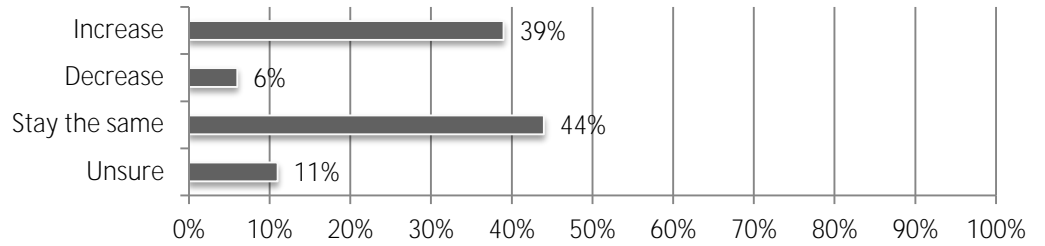
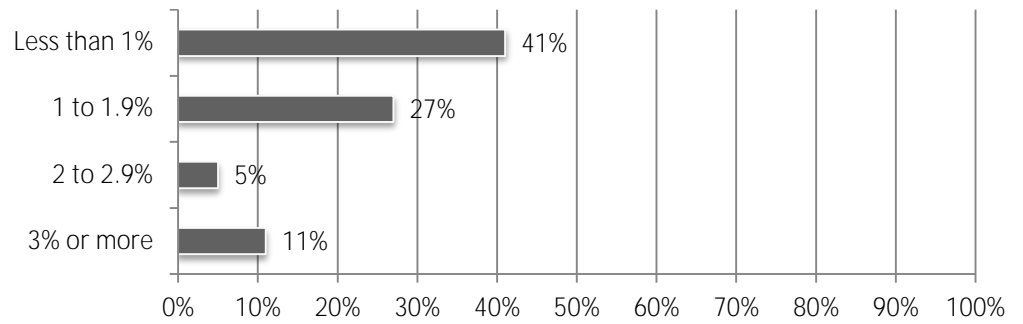
All projects	78%	0%	22%	78%
Hospital	64%	0%	36%	64%

**Net equals difference between number of "Higher" and "Lower" responses as percent of total.*









Software Category	Percentage 1	Percentage 2	Percentage 3	Percentage 4
Accounting software	17%	80%	0%	3%
Building Information Modeling	24%	52%	0%	24%
Client relationship management software	20%	60%	0%	20%
Document management software	33%	52%	3%	12%
Estimating software	26%	71%	0%	3%
Fleet tracking/management software	27%	55%	0%	18%
Human resources software	21%	61%	0%	18%
Payroll software	12%	76%	0%	12%
Prequalification software	3%	68%	0%	29%
Project collaboration software	18%	64%	0%	18%
Project management software	41%	44%	0%	15%
Scheduling software	24%	67%	0%	9%
Service management software	12%	58%	0%	30%
Subcontractor bid management/IT B software	10%	65%	0%	26%

